



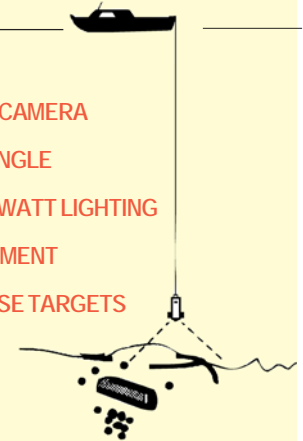
JW FISHERS MFG INC
 1953 COUNTY ST.
 E. TAUNTON, MA 02718 USA

(508) 822-7330; (800) 822-4744; FAX (508) 880-8949
 Email: jwfishers@aol.com WEB: www.jwfishers.com

TECHNICAL DATA SHEET



- VERTICAL OR SIDE VIEWING
- UP TO 1,000 FOOT DEPTH CAPABILITY
- SHARP PICTURE - HI RESOLUTION B&W CAMERA
- LARGE VIEWING AREA - WIDE VIEWING ANGLE
- BRIGHT PICTURE - HIGH INTENSITY 200 WATT LIGHTING
- COMPACT SYSTEM FOR RAPID DEPLOYMENT
- AVOID TIME CONSUMING DIVES ON FALSE TARGETS
- HAND HELD OR LOWERED FROM BOAT
- LEAK DETECTION CIRCUITRY



A WORD ABOUT INFRARED CAMERAS:

Some underwater camera systems on the market today claim they contain "infrared cameras" that can see in total darkness. These are not the heat sensitive cameras normally referred to as infrared. These "infrared cameras" require an infrared light source made up of photo diodes. The problem is this light source has an extremely short range in the water. In actual tests, these "infrared cameras" had a viewing range and picture quality significantly less than that of our high resolution low light cameras. Infrared cameras do have the advantage of being extremely cheap. These cameras cost far less than even the high quality lens used in our underwater video systems.

DV-1 Dropped Video

JW Fishers DV-1 dropped video system is ideal for checking sites before diving or performing a variety of underwater search and inspection operations. Difficult or dangerous dives can be avoided, and underwater objects or search areas can be viewed and recorded, without deploying a diver. The DV-1 can assist law enforcement agencies in their evidence recovery operations and help public safety dive teams in their search efforts, dramatically reducing the time they spend underwater and increasing safety.

The DV-1 system includes a high resolution black & white camera in a rugged corrosion-proof PVC housing, two powerful 100 watt quartz halogen lights and a 150 foot cable. The standard B&W camera has a 0.5 lux rating and a 6mm lens which gives a 50 degree viewing angle. If the DV-1 is 10 feet from the bottom an area approximately 10 foot in diameter is being viewed. The high power lights are mounted on outrigger arms placing them away from the underwater housing to disperse the light pattern over a larger area and eliminating lighting "hot spots". The electrical cables are encased in a hollow core polypropylene rope that protects them and provides a strong tow member. Sharp, clear video images are produced by the DV-1's camera, which are sent topside for viewing. The picture can be viewed on a video monitor, a TV with a video input jack, a computer equipped with a video capture card, or Fishers VRM-1 monitor and recorder with built-in ultra bright flat screen monitor and digital video recorder.

The DV-1 was designed for use as a vertical drop camera, however, a second tether line can be attached to front of the housing to lift it for horizontal viewing. The housing can also be carried by a diver to perform inspections or film underwater objects.

Unlike battery powered systems, the DV-1 is powered by 120 volts ac allowing unlimited operating time. Options for the system include color cameras, cable lengths up to 1,000 feet and various depth ratings to 1000 feet. Complete system covered by a 2 Year Warranty.

SPECIFICATIONS

PERFORMANCE/DESCRIPTIONS:

- Camera Hi resolution, 0.5 lux, B&W
- Lens 6 mm
- Lighting two 100w tungsten halogen
- Input voltage 120 vac
- Power consumption 225w

DIMENSIONS/WEIGHT:

- Case with ballast 5"D x 15"L 30 lbs.
- Cable75" x 150'-1,000' 22-150 lbs.
- Shipping boxes:
- (150ft wt ballast) 24" x 24" x 24" 70 lbs.
- (250ft wt ballast) 24" x 24" x 24" 100 lbs.
- (500ft wt ballast) 30" x 24" x 23" 170 lbs.
- (1,000ft wt ballast) 41" x 30" x 16" 425 lbs.

MATERIALS/COLOR:

- Case High impact PVC/yellow
- Cable 6 conductor in polypropylene/yellow

OPTIONS

- Up to 1,000 ft of cable
- .07 lux B&W camera
- Color cameras
- B&W monitors
- Color monitors
- 500' Depth Capability
- 1,000' Depth Capability
- Four 100w lights
- 12vdc or 220vac (Europe)
- Altimeter
- PAL B&W or color camera (Europe)
- Time/date/GPS on screen
- VRM-1 monitor & recorder₂₁₁