

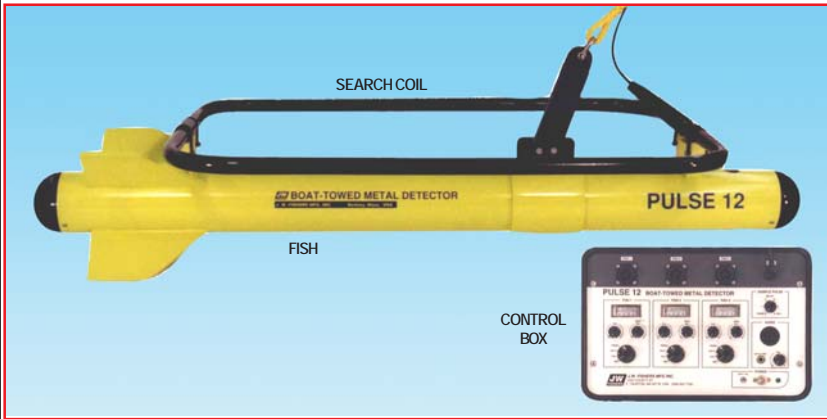


# JW FISHERS MFG INC

1953 COUNTY ST.  
E. TAUNTON, MA 02718 USA

(508) 822-7330; (800) 822-4744; FAX (508) 880-8949  
Email: info@jwfishers.com WEB: www.jwfishers.com

# TECHNICAL DATA SHEET

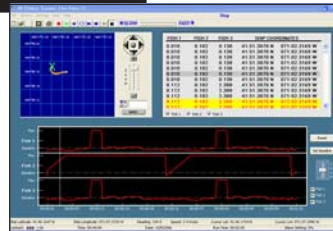


- **VERY SENSITIVE**
- **CAN TOW UP TO THREE SEARCH COILS**
- **16 foot x 24 foot DETECTION AREA**
- **DETECTS ALL METALS**
- **150-300 feet OF CABLE**
- **1-4 MPH TOW SPEED**
- **2 YEAR WARRANTY**



## PULSE 12 Boat Towed Detector

Fishers top of the line boat towed pulse induction metal detector detects both ferrous (iron/steel) and nonferrous (gold/silver/aluminum/bronze/etc.) metals. The PULSE 12 is the most powerful towed underwater "all metals" detector on the market today. The system has a very large detection envelope with good detection capabilities in salt water and even greater range in fresh water or on land. The Pulse 12 comes with a Control Box, a Search Coil with 150 feet of cable, and a Fish. The Search Coil mounts on the Fish and is towed through the water at 1-4 mph. The Control Box has inputs for three Search Coils. Two additional Search Coils can be added at any time and come complete with cable and fish. The additional Coils allow larger areas to be covered. One Fish is towed directly behind the center of the boat and the other Fish are towed to each side of the boat. One, two, or three Fish can be operating at the same time. When using multiple Fish, each has its own controls and meter on the Control Box. An alarm sounds and the meter swings up when any of the Search Coils detect a target. The complete system is powered by two 12 volt batteries. An Altimeter can be attached to the Fish to inform the operator of the distance between the Fish and the bottom. Optional Tracker software is available that displays and records all data including boat tracking. The PULSE 12 is covered by a TWO YEAR WARRANTY.



Tracker 3 Software Available

### SPECIFICATIONS

SENSITIVITY (in water):	FRESH	SALT
• Piece of eight .....	17 in.	4 in.
• 25 lb. lead ingot .....	40 in.	31 in.
• One gallon can .....	6 ft.	4 ft.
• Automobile .....	13 ft.	9 ft.
• Ship (max. range) .....	16 ft.	14 ft.

### PERFORMANCE/DESCRIPTIONS:

- Max detection area (fresh water) ..... 16 ft deep, 24 ft. wide.
- Tow speed ..... 1-4 mph.
- Input voltage ..... 24 vdc.
- Power consumption ..... 8 watt.
- Readout ..... Meter and audio.

### DIMENSIONS/WEIGHTS:

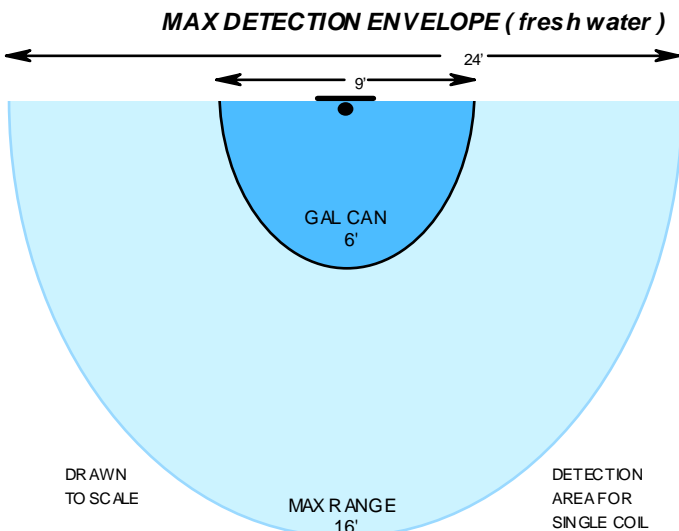
- Coil ..... 24"W x 36"L ..... 10 lbs.
- Fish ..... 4'L x 4.5"Dia ..... 20 lbs.
- Control Box ..... 14"L x 10"W x 6"H ..... 8 lbs.
- Cable ..... .75"D x 150'-300' ..... 16-32 lbs.
- Shipping Boxes:
  - fish ..... 60"L x 11"W x 13"H ..... 48 lbs.
  - coil, cable, CB ..... 41"L x 30"W x 8"H ..... 75-90 lbs.

### MATERIALS/COLOR:

- Fish ..... High impact PVC, stainless/yellow.
- Control Box ..... High impact U/W Kinetics case, PVC/black.
- Cable ..... 8 conductor in polypropylene/yellow.
- Coil ..... High impact PVC, epoxy/black.

### OPTIONS

- Additional Search Coils
- Altimeter
- Downrigger
- 300 foot cable
- RS232 Output
- Tracker Software
- 0-5 vdc Analog Output

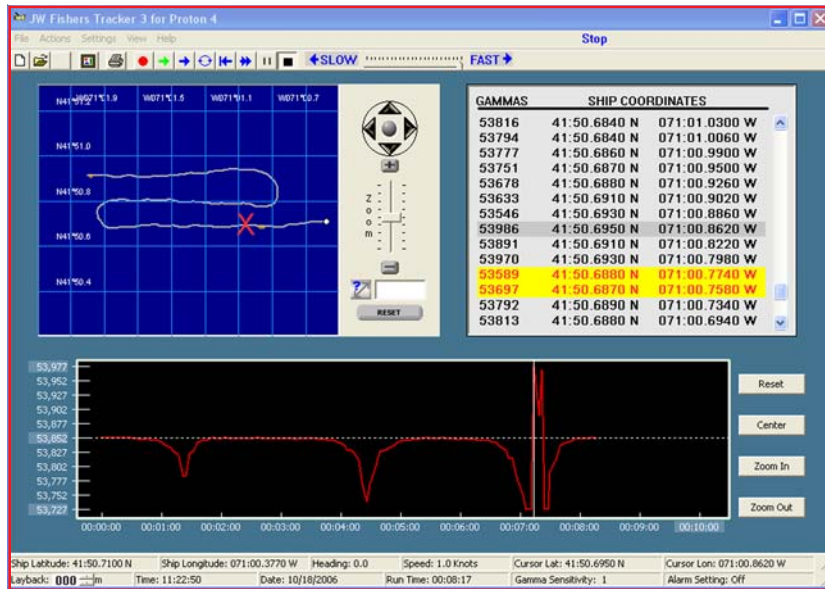




**JW FISHERS MFG INC**  
 1953 COUNTY ST.  
 E. TAUNTON, MA 02718 USA

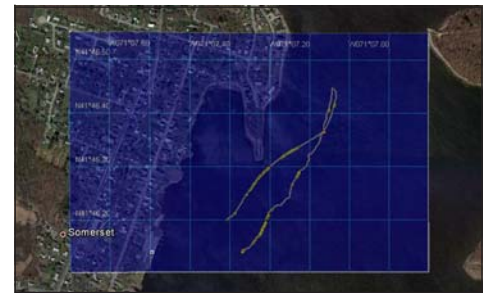
(508) 822-7330; (800) 822-4744; FAX (508) 880-8949  
 Email: info@jwfishers.com WEB: www.jwfishers.com

# TECHNICAL DATA SHEET



SOFTWARE DISPLAY for PROTON 3/4

- TRACKS AND STORES ALL DATA ON PC
- DISPLAYS LAST 1-60 MINUTES OF READINGS IN GRAPH FORM
- DISPLAYS OUTPUT READINGS AND GPS POSITION
- DISPLAYS BOAT SPEED, HEADING, AND LAYBACK
- DISPLAYS SENSITIVITY AND ALARM SETTINGS
- RUNS ON PC XP-WIN 8
- BOAT TRACK EASILY LAID ON MAPPING PROGRAM



OVERLAID ON MAPPING PROGRAM

## TRACKER 3 for Proton 3/4 and Pulse 10/12

Fishers Tracker 3 software makes it easy to do a thorough search of any underwater area. This software is specially designed to work with Fishers Proton 3 and 4 magnetometers and Pulse 10 and 12 towed metal detectors. The display shows the path of the boat as it moves over the search area along with a cascading waterfall of the detector's readouts and the GPS position associated with each readout. When used with the Pulse 12 connected to more than one fish, multiple readouts are displayed. When a target is detected, the readouts and coordinates change color so the operator can quickly see when and where a target is detected. A software configurable audible alarm alerts the user to targets being detected.

At the bottom left of the screen is a graphical representation of the readouts which allow the user to display as little as one minute or up to one hour of data. When a target is detected the line swings up on the graph. When used with the Pulse 12, with more than one fish, multiple graphs are displayed. In addition to detection and GPS data, other information displayed are the boat's speed, compass heading, sensitivity setting, layback, time, date, and runtime.

The software shows a map window which uses the boat's GPS to plot the path of the boat and the position of targets (hits). When the cursor points at a "hit" on the graphical readout, the GPS coordinates for the hit is highlighted and a red "X" appears in the map window. Clicking an item on the readout list also places an "X" on the map showing the position of the target. The layback entry adjusts for the cable distance from the boat to the towed fish for a more accurate target position. The Tracker map can be exported as a image with a KML file to allow it to be easily overlaid on other mapping programs (as shown above). All data can be stored on the PC hard-drive or disk.

Using the computer mouse the operator can manipulate either the boat track image or the graphical image of the readouts. Clicking on the RESET button will erase the displayed data. Clicking on CENTER Button centers the displayed image. The Zoom-In and Zoom-Out buttons allow the size of the graph to increased or decreased. The boat track image also has an additional button that allows the image to be moved up, down, left, or right.

Tracker 3 software is provided on a CD and can also be downloaded at time of order.