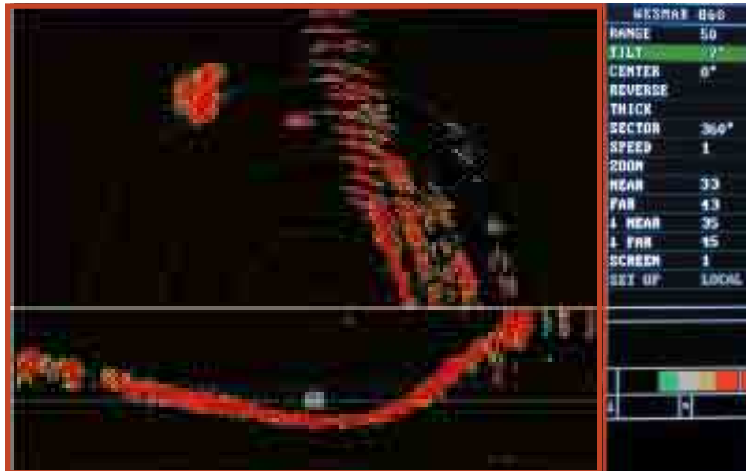




HD860 Series Sonar

Precision Stabilized Beam

Increase Your Catch With the Newest Technology



• Split Screen Mode

Scan forward and then across the bottom. This is ideal for mid-water and bottom trawling. Head for the fish out in front and watch as they pass to either side of the vessel. Sounders only mark under the vessel and not to the sides, missing the target.

Split Screen, top part forward scan, lower part profile, each with separate adjustments.

• Stabilized Down Sounder

When the seas get rough, the best of sounders lose track of the bottom. The HD860 in the down sounder mode, with active stabilization on, will keep the sound beam where it should be: straight down. Lower the hoist below the bubble layer for a ground picture unmatched by other sounders. Fishing in the ice? Raise the transducer inside the sea chest, and the WESMAR keeps running.



WESMAR's HD860 solves the tough challenge of seeing fish close to the surface and close to the bottom. New stabilization technology stays on the fish even in rough seas.

• Active Stabilization

WESMAR's new HD860 Series Sonar incorporates electronic beam stabilization technology developed and refined over 4 years. A precision electronic gyro is mounted on the sonar transducer. The beam is constantly corrected for pitch and roll wherever the beam is scanning. Unlike other sonar that stabilize using sensors on the vessel, this technology provides instantaneous precision stabilization of the actual beam. With conventional stabilization, even slight movement of the beam can be significant at extreme ranges, possibly hundreds of feet up and down, which makes fish location difficult, except at close range. By limiting this bounce, the effective sonar range can be extended.

• Digital Link

Long interconnect cable runs are always subject to noise and low sonar performance. WESMAR's new digital link between the sonar electronics (near the transducer) and the computer console in the wheelhouse operate noise free for maximum sonar performance.



48 Years of Continuous Product Development

HD860 Series

Specifications

HD860/85-10

Frequency kHz 60 kHz
 Hoist Height 58.3 inches
 Minimum Seachest 39.37 inches
 Retraction Time 5 seconds
 Soundbeam 7.6°V 9.8°H

HD860/110-10

Frequency kHz 110 kHz
 Hoist Height 58.3 inches
 Minimum Seachest 39.37 inches
 Retraction Time 5 seconds
 Soundbeam 4.2°V 5.2°H

HD860/110-8

Frequency kHz 110 kHz
 Hoist Height 33 inches
 Minimum Seachest 25.5 inches
 Retraction Time 3 seconds
 Soundbeam 4.6°V 7.0°H

HD860/160-8

Frequency kHz 160 kHz
 Hoist Height 33 inches
 Minimum Seachest 26.5 inches
 Retraction Time 3 seconds
 Soundbeam 6.5°V 6.5°H

Notes:

1. Pulsewidth is selectable or automatically adjusted with changes in the range scales.

2. Power boost is provided in all models.

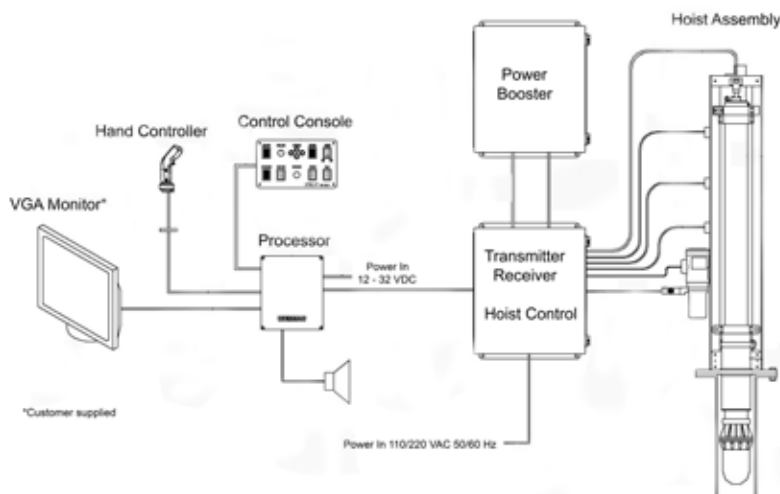
3. The advanced profiling features are provided in all models.

4. Heavy duty hull package, increased transmit power and soundome that has active stabilization are provided in all models.

12/24 VDC Electric Motors

160 kHz
 22 inches
 23 inches
 20 seconds
 6.5°V 6.5°H

HD860 Block Diagram



System Components include: dash mounted console and hand-held controller.

Increase Your Catch With the New Technology WESMAR HD860 Sonar

New control panel is designed for quick and easy operation to find fish, fast. There are no menus to scroll when tracking the fish so your eyes stay on the fish. Changes to range, sector, bearing, and tilt are immediate because each has its own separate control. The quick reverse feature is perfect. Once fish are detected you can hit quick review and waste no time returning to the fish.



PRODUCT WARRANTY

Commercial warranty and consumer limited warranty, disclaimer, and remedies. Seller warrants title, materials, and workmanship on equipment, except components manufactured by others for which seller assigns, as permitted, the original manufacturer's warranty. Seller's warranty period for all applicable express or implied warranties shall be ninety (90) days after installation or one (1) year after date of shipment to the original buyer, whichever time period expires first. Nonconforming equipment reported to seller during the applicable warranty period and returned to seller at buyer's expense and risk shall be repaired, or replaced at seller's option. If seller is unable or unwilling to repair or replace such reported and returned nonconforming equipment within a reasonable time, then buyer shall be entitled to a refund of the purchase price of the equipment as buyer's sole remedy. This paragraph sets forth buyer's exclusive remedies for nonconforming goods. This commercial warranty and consumer limited warranty is in lieu of all other warranties, express or implied, including design, course of dealing, merchantability, and fitness for a particular purpose.

NOTE: LIMITATION OF SELLER'S COMMERCIAL AND CONSUMER LIABILITY. Seller shall not be liable on any claim for loss of use, revenue, or profit, for injury, or for any other incidental or consequential damages, regardless of the basis for buyer's claim(s), including, but not limited to, the law of contract, warranty, or tort. In no case shall seller's liability on any claim(s) exceed the amount paid to seller for the purchased goods.