

# JRC

## DGPS NAVIGATOR JLR-7700MKII

12-Channel Parallel for simultaneous reception of 12 satellites.

The DGPS Navigator composed of a DGPS receiver and a LCD display unit ensures very accurate position fixing.



# Very accurate DGPS position fixing, large LCD graphics and simple operation



NNN-4331  
DGPS Receiver

## DGPS NAVIGATOR JLR-7700MKII

### Large LCD Display

Necessary navigational information can be displayed on a large LCD screen at a glance, ensuring simple operation without troublesome switchover of displays.

### More Accurate DGPS Positioning

Differential GPS position data is automatically received in DGPS service areas, and own ship's position fixes are displayed with very high accuracy.

### Waypoint Memory

Up to 499 waypoints can be stored in the internal memory with their place names in 8 alphanumeric characters.

### Data Outputs

Two data ports are provided: one is an RS-422 port, and the format is selectable from NMEA0180, NMEA0183 (version 1.5 or 2.1) and a JRC.

### Navigational Calculations

Navigational calculations are made in the Great Circle or Rhumb Line mode.

### Loran C/A TD Display

The GPS position fixes can be converted into Loran C or A time difference values and displayed on the LCD screen.

### Relay Contact Output

A log pulse or external buzzer alarm signal is available from the relay contact output.

### Weather information display

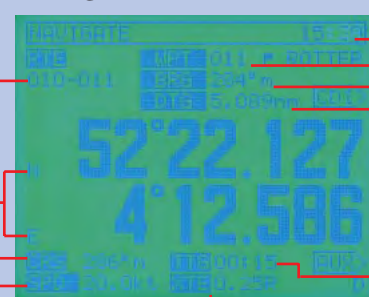
Local weather and sea conditions in coastal sea areas of Japan can be displayed.

Actual size

The DGPS Navigator offers position fixing with high accuracy anywhere in the world. Own ship's position, course, speed, planned route, bearing and distance are displayed on the large LCD screen.

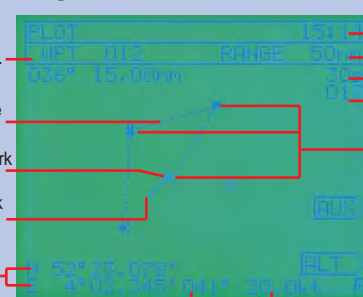
## DISPLAY EXAMPLES

### NAVIGATE



Local time  
Waypoint No.  
Bearing  
Distance  
Current position (lat/Lon)  
Course  
Speed  
Course deviation value and direction to steer

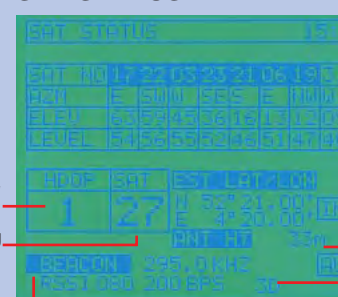
### PLOT



Waypoints No.  
Present route (dotted line)  
Own ship's mark (+mark flicker)  
Ship's track (solid line)  
Current position  
Course  
Speed

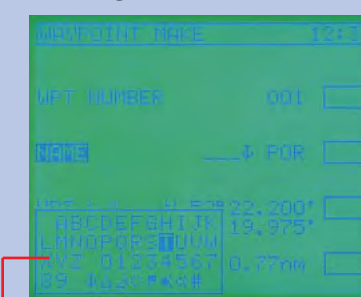
Local time  
Display range  
Track memory intervals  
Number of tracked memory  
Waypoint marks  
Positioning accuracy (HDOP)  
Number of orbiting satellites  
Display select menu

### SAT STATUS



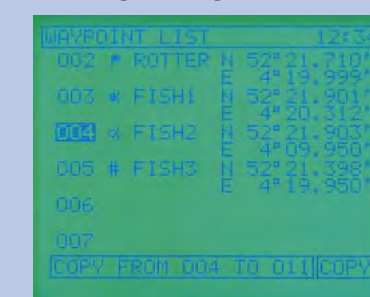
Satellite No.  
Sat azimuth angle  
Sat elevation angle  
Receiving signal level  
Display select menu  
Antenna height  
3D fix display  
Beacon parameters  
Frequency, RSSI baud rate

### WAYPOINT MAKE



List of characters

### WAYPOINT LIST



Waypoint list

## SPECIFICATIONS

### Position Accuracy

GPS position fix: 15 m 2DRMS (HDOP 4)  
 DGPS position fix: 5 m 2DRMS (HDOP 4)

### Beacon Receiving

Receiving frequency: 283.5KHz to 325KHz  
 Frequency step: 500Hz  
 Beacon station selection: Automatic or manual setting  
 of a frequency and baud rate.  
 Demodulation: Minimum shift keying (MSK)  
 RF bit rate: 50/100/200 bps

### General Functions

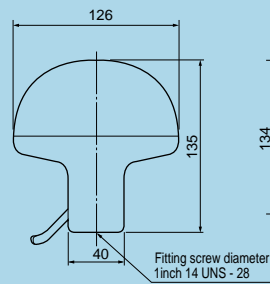
Display type: 5-inch STN LCD, 160 × 128 dots  
 Back-lighting: EL (LCD), lamps (keyboard)  
 Waypoint memory: Up to 499 waypoints including 100 event marks (WPT No. 400 to 499), each point with a place name in 8 alphanumeric characters  
 Route plan: One route with up to 499 waypoints  
 Alarms: Waypoint arrival, cross track error, anchor watch, boundary and no-fix  
 Position correction: Selectable from 46 geodetic datum, and manual lat./lon. entry  
 Display language: English or Japanese  
 Operating temperature: DGPS Receiver: -25 to +55°C  
 Display Unit: -15 to +55°C  
 Power requirements: 12/24 VDC, 10W or less  
 100/220 VAC with AC power supply unit (option)

## COMPONENTS(Standard)

Component	Model	Q'ty
Display unit	NWZ-4570B	1
DGPS Receiver	NNN-4331	1
DC Power cable	CFQ-3598B	1
Screw mount	MTV302007	1
Fitting belt	MPBP02520	1set
DGPS connection cable	CFQ-8919	1
Junction box	NQE-7700	2
Pole mounting kid	MPBP30608	1kit
Instruction parts	Copper tape, Connector	1set
Spare parts	2A Fuses	3
Instruction manual		1copy
Extension cable	250V-MPYCYS-5	Option

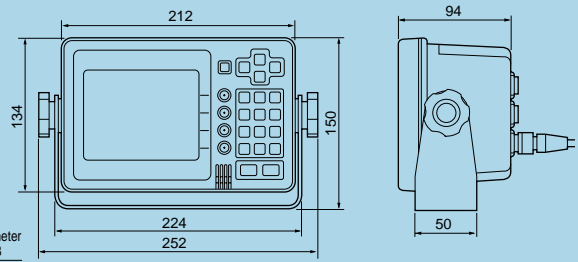
## DIMENSION

DGPS Receiver (NNN-4331)



Weight: Approx. 1.7 kg

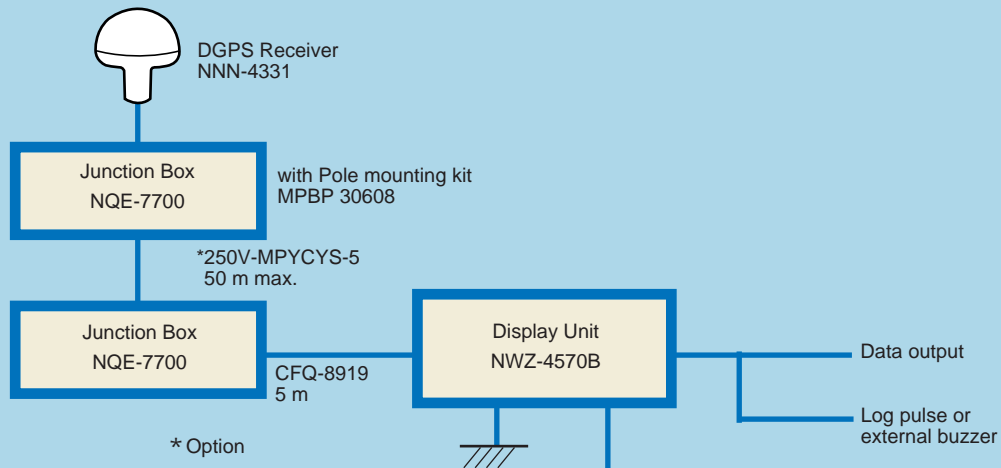
Display Unit (NWZ-4570B)



Weight: Approx. 1.8 kg

Unit:mm

## SCHEMATIC DIAGRAM



\* The equipment appearance and specifications may be subject to change without notice.

For further information, contact:



**Japan Radio Co., Ltd.**

Since 1915

大连宁航通导科技发展有限公司

T: 0411-82568595 82568596

F: 0411-82561282

Http://www.wesmar.cn

Email: sales@wesmar.cn

19EM

ISO9001, ISO14001 Certified